

March 2021, Kottlingbrunn/Austria

## NEWS RELEASE

### 新聞稿

## **WITTMANN CODEMAX: material distribution monitoring for the most challenging applications**

威猛物料選料站 CODEMAX：物料分配監控適用於最具挑戰性的應用

*A mold change on processing machines is often accompanied by a change of material as well. The latter should proceed as quickly, easily and safely as possible. A single mistake here can lead to serious problems, which in most cases are not detected at once and cause high extra costs in terms of many faulty parts. Using monitored **CODEMAX** coupling stations from WITTMANN is a way to ensure that the implementation and results of material changes come up to even the most stringent quality standards.*

在加工機上更換模具通常還需要更換材料。後者應盡快、輕鬆且安全地進行。這裡的一個錯誤可能會導致嚴重的問題，在大多數情況下，這些問題不會立即被發現，並且會因許多故障零件而導致高額的額外費用。使用威猛（WITTMANN）監控的 CODEMAX 耦合站可以確保材料變更的實施和結果達到最嚴格的質量標準。



**CODEMAX RFID coupling station from WITTMANN.**  
威猛（WITTMANN）的 CODEMAX RFID 選料站。

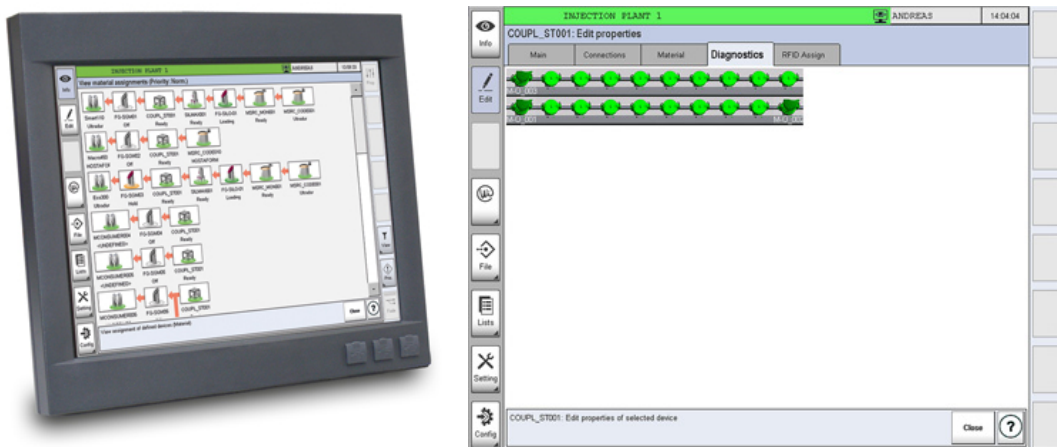
The mechanical design of material distribution systems can vary greatly and may be planned individually. Moreover, these systems can be made from a wide range of different materials, such as entirely from stainless steel, but also from combinations of hardened stainless steel with glass elements – depending on the requirements in each case. WITTMANN deliberately dispenses with welding in producing its material distributors. **CODEMAX** coupling stations offer a pluggable version with sealed pipe clamps, which permits subsequent exchange of pipe elements and the use of wear-resistant parts where necessary.

物料分配系統的機械設計可能會有很大不同，並且可以單獨計劃。此外，這些系統可以由多種不同的材料製成，例如完全由不銹鋼製成，也可以由硬化不銹鋼與玻璃元素的組合製成-視每種情

況的要求而定。威猛（WITTMANN）在生產材料分配器時特別採用非焊接的作法。CODEMAX 選料站提供了帶密封管夾的可插拔版本，可以隨後更換管件，並在必要時使用耐磨部件。

The special fast camlock couplings for material transport pipes are manufactured exclusively for use on WITTMANN **CODEMAX** coupling stations. They consist of aluminum and are fully sealed, are produced without sensitive threading, and are mounted on stainless steel pipes. This is the only way to ensure that any individual requirements specified by customers can actually be met, such as “exclusively stainless steel for parts coming into contact with products”. Their extremely sturdy design also copes with rough handling of the couplings in operation. After all, it quite often happens that material hoses are dropped onto the floor together with the couplings – and must still be able to withstand such incidents without any deformations or other kinds of damage. The camlock couplings ensure safe connections without leakages and can be re-plugged quickly nevertheless.

用於物料輸送管的特殊快速凸輪鎖聯軸器是專門為在威猛 CODEMAX 聯軸器上使用而製造的。它們由鋁製成，並且完全密封，無需細密螺紋即可製成，並安裝在不銹鋼管上。這是確保可以真正滿足客戶指定的任何個別要求的唯一方法，例如“與產品接觸的部件僅使用不銹鋼”。其極其堅固的設計還可以應對操作中對聯軸器的過度施力操作。畢竟，經常會發生材料軟管與連接器一起掉落到地板上的情況，並且仍然必須能夠承受這種事故而不會發生任何變形或其他種類的損壞。凸輪鎖聯軸器可確保安全連接而無洩漏，但仍可快速重新插入。



**M8 network control. Picture right: CODEMAX visualization on the screen.**

M8 網絡控制。右圖：螢幕上的 CODEMAX 視覺效果。

RFID antennas and tags on every coupling make sure that correct connections are established in every case between material feeding pipelines and processing machines. The connections are monitored via the WITTMANN network control for materials handling systems and invariably checked against the input from the system operator. If a coupling process is triggered on the network control system without operator input, this immediately generates an error signal, and the material transport affected is stopped. This reliably prevents feeding of the wrong material to a processing machine. The same procedure is followed if a material change has been triggered via the control system, and the wrong material is connected to the coupling station. Before a coupling process is carried out, the system operator is shown which material hose must be connected to which distributor unit. Both incorrect and open connections are visualized on the control system's graphic display. All of this ensures in every single case that the processing machines are always supplied with only the required material, and leakages caused by open connections are eliminated as well.

每個耦合器上的 RFID 感應和標籤可確保在每種情況下在進料管線和處理機之間建立正確的連接。通過 WITTMANN 網絡控制系統監控材料處理系統的連接，並根據系統操作員的輸入進行檢查。如果在沒有操作員輸入的情況下在網絡控制系統上觸發了耦合過程，則會立即生成錯誤信號，並停止受影響的物料運輸。這可靠地防止了將錯誤的材料供給到加工機。如果通過控制系統觸發了物料更換，並且將錯誤的物料連接到耦合站，則遵循相同的步驟。在執行連接過程之前，將向系統操作員顯示必須將哪個物料軟管連接到哪個分配器單元。錯誤和斷開的連接都可以在控制系統的圖形顯示屏上看到。所有這些確保了在每種情況下，始終僅向加工機提供所需的材料，並且消除了因開放式連接而引起的洩漏。

Mounted inside an aluminum housing and over-molded with a shock-absorbing layer of plastic, the RFID antennas are optimally protected against shocks. Existing material distributors can also be retrofitted with RFID antennas, and subsequent extension of monitored coupling stations presents no problems.

RFID 感應安裝在鋁製外殼內，並包覆有一層塑料減震層，可最佳地保護其免受衝擊。現有的物料分配器也可以加裝 RFID 感應，並且隨後擴展受監視的選料站也能順暢作業。

There are many good reasons in favor of using a WITTMANN **CODEMAX** coupling station for distributing materials. **CODEMAX** is easy to operate, and all currently available coupling options can be retrieved from a central point. With the help of such a system, fast material changes become normal practice, material sources such as dryers, roller containers or external silos can be used by several consumers, and all in all, RFID monitoring ensures a faultless production process.

有許多充分的理由，支持選擇使用威猛 CODEMAX 選料站進行材料分配。CODEMAX 易於操作，並且可以從系統主機檢索所有當前可用的耦合選項。借助這樣的系統，快速的物料更換已成為常態，諸如乾燥機，滾筒式集裝箱或外部筒倉等物料源可以由多個工作站使用，更甚者，RFID 監控可確保生產過程無故障。



## The WITTMANN Group 關於威猛集團

The WITTMANN Group is a globally leading manufacturer of injection molding machines, robots and auxiliary equipment for processing a great variety of plasticizable materials – both plastic and non-plastic. The group of companies has its headquarters in Vienna, Austria and consists of two main divisions: WITTMANN BATTENFELD and WITTMANN. Following the principles of environmental protection, conservation of resources and circular economy, the WITTMANN Group engages in state-of-the-art process technology for maximum energy efficiency in injection molding, and in processing standard materials and materials with a high content of recyclates and renewable raw materials. The products of the WITTMANN Group are designed for horizontal and vertical integration into a Smart Factory and can be interlinked to form an intelligent production cell.

The companies of the group jointly operate eight production plants in five countries, and the additional sales companies at their 34 different locations are present in all major industrial markets around the world.

WITTMANN BATTENFELD pursues the continued strengthening of its market position as a manufacturer of injection molding machines and supplier of comprehensive modern machine technology in modular design. The product range of WITTMANN includes robots and automation systems, material handling systems, dryers, gravimetric and volumetric blenders, granulators, temperature controllers and chillers. The combination of the individual areas under the umbrella of the WITTMANN Group enables perfect integration – to the advantage of injection molding processors with an increasing demand for seamless interlocking of processing machines, automation and auxiliaries.

威猛集團是射出機、機械手和周邊輔助設備的全球領先製造商，用於加工各種可塑材料（包括塑料和非塑料）。威猛集團總部設在奧地利維也納，由兩個主要部門組成：威猛巴頓菲爾和威猛。威猛集團遵循環境保護、節約資源和循環經濟的原則，致力於最先進的工藝技術，以最大程度地提高注塑成型的能效，以及用於處理標準材料以及回收料和可再生原料含量高的材料。威猛集團的產品旨在將水平和垂直方向集成到智能工廠中，並且可以相互鏈接以形成智能生產單元。

威猛集團在全球 5 個國家設有 8 個生產工廠，其中 34 個直屬分公司銷售遍布全國所有主要工業市場。

威猛巴頓菲爾致力於不斷增強其作為注塑機製造商和模組化設計的綜合現代機械技術供應商的市場地位。威猛的產品系列包括機械手和自動化系統、中央供料系統、除濕乾燥機、秤重式和體積式的計量機、粉碎機、模具溫度控制器和冷卻器。威猛集團的結合已經使所有產品線連接為一體，提供塑料加工商在射出機、自動化和輔助設備的無縫接軌，成為尋求集成方面的所在優勢-所有這些都以漸進的速度發生。

威猛台灣分公司針對客戶需求提供系統方案為主力；以技術性整合、技術性提供之「整合」系統，從技術提供、技術諮詢，服務、訓練工程師到位、不間斷服務及教育訓練之售服，從觀念、技術及加工條件之支援，來自奧地利總公司之技術支援等，滿足全面性服務。

更多信息可參訪我們的網站 [www.wittmann-group.tw](http://www.wittmann-group.tw) LINE @: [@witw](https://www.facebook.com/WittmannBattenfeldTaiwan)

FB: <https://www.facebook.com/WittmannBattenfeldTaiwan>

YOUTUBE: <http://www.youtube.com/c/WittmannBattenfeldTaiwan>

威猛巴頓菲爾有限公司 Wittmann Battenfeld (Taiwan) Co., Ltd.

40768 台中市西屯區工業區 36 路 16 號

No.16, Gongyequ 36th Rd., Xitun Dist., Taichung City 40768, Taiwan (R.O.C.)

Tel.:886 4 23595158 Fax.:886 4 23592878 E-mail : [info@wittmann-group.tw](mailto:info@wittmann-group.tw)