

PRESS RELEASE / 新聞稿

August 2020, Kottlingbrunn/Austria

WITTMANN BATTENFELD Highlights 2020

威猛巴頓菲爾 2020 亮點

WITTMANN BATTENFELD presents its highlights digitally

威猛巴頓菲爾以數位化展示其亮點

Since FAKUMA 2020 has been postponed to next year due to the health risks arising from the SARS-CoV-2 virus, WITTMANN BATTENFELD has decided to present the exhibits originally planned for the Fakuma and several other interesting applications in the form of product videos, and post them on a “Virtual Fakuma” portal.

由於 SARS 到 CoV-2 病毒帶來的健康風險，FAKUMA 2020 已推遲至明年 2021 年舉辦，因此威猛巴頓菲爾公司決定以產品視頻的形式展示，依最初計劃用於 Fakuma 和其他一些有趣應用的展品，以及將其發佈到“虛擬 Fakuma”門戶上。

Presentation of the videos will take place primarily in personal meetings with customers; web conferences are also planned as an alternative. To present the product highlights as vividly as possible to a wide public, the product videos will also be made available on the company's YouTube channel.

視頻的展示將主要在與客戶的個人會議中進行；網絡會議也可以作為替代方案。為了向廣大公眾盡可能生動地展示產品亮點，產品視頻也將在公司的 YouTube 頻道上發布。

An innovation: the Ingrinder

創新：新概念 – Ingrinder

With the Ingrinder, WITTMANN BATTENFELD has created an innovative solution to promote the recycling economy. This product is an injection molding system with integrated sprue picker, granulator and vacuum conveyor. The granulator and the sprue picker can be operated via the machine's UNILOG B8 control system.

威猛巴頓菲爾通過 Ingrinder 創建了創新的解決方案，以促進循環經濟。該產品是具有集成式料頭夾取器、粉碎機和真空輸送機的注塑系統。可以通過機器的 UNILOG B8 控制系統來操作粉碎機及料頭夾取器。

WITTMANN BATTENFELD presents this innovation on a machine from the servo-hydraulic *SmartPower* series, a *SmartPower* 60/210. On the machine, a can with a lid is produced from PS with a 2-2-cavity mold. A WP50 sprue picker from WITTMANN with swivel drive removes

the sprue and passes it to the G-Max granulator integrated in the system. The material recycled by the granulator is then transported to the machine's material hopper by a FEEDMAX basic vacuum conveyor. The WITTMANN vacuum conveyors enable alternating conveyance of virgin material and regrind, so that a thorough blend is created by this process, together with discharge of the material into the hopper.

威猛巴頓菲爾在伺服液壓 SmartPower 系列的 SmartPower 60/210 的機器上展示了這一款創新。在機器上，用帶有 2-2-腔模具的 PS 生產帶有蓋的罐子。威猛展出帶有旋轉驅動器的 WP50 澆口夾取器(料頭夾取器)將澆口移除，並將其傳遞給系統中集成的 G-Max 粉碎機。粉碎機回收的物料隨後通過 FEEDMAX basic 真空輸送機輸送到機器的料斗中。威猛真空輸送機可以交替輸送原始物料和再研磨物料，因此，通過此過程可以形成徹底的混合，並將物料排放到料斗中。

High-speed EcoPower Xpress for the packaging industry

適用於包裝行業的高速 EcoPower Xpress

Another highlight that WITTMANN BATTENFELD will demonstrate to its existing and prospective customers is a machine from the *EcoPower Xpress* series. This *EcoPower Xpress* is an all-electric, high-speed and high-performance machine model primarily of interest for thin-walled applications in the packaging industry. An *EcoPower Xpress* 300/1100+ equipped with the new WITTMANN SONIC 131 top-entry robot will be shown. This robot can be used for applications with a robot cycle time from 4 s. With a mold supplied by Abate, Italy, this machine will produce a margarine tub from PP within a cycle time of 4 seconds.

威猛巴頓菲爾將向其現有客戶和潛在客戶展示的另一個亮點是 EcoPower Xpress 系列機器。這款 EcoPower Xpress 是全電動、高速和高性能的機器型號，主要用於包裝行業中的薄壁應用。將顯示配備新的威猛機械手機型 SONIC 131，由 EcoPower Xpress 300/1100 + 頂部進入。該機器手可用於循環周期為 4s(4 秒)的應用。使用意大利 Abate 公司提供的模具，該機器將在 4 秒的循環時間內用 PP 生產“人造黃油桶”。

Medical application on MicroPower 15/10 production cell

MicroPower 15/10 生產單元的醫療應用

Moreover, WITTMANN BATTENFELD will demonstrate its expertise in the field of medical technology with a machine from the *MicroPower* series conceived for the production of micro parts in a clean room version. Using a *MicroPower* 15/10 with 150 kN clamping force, a micro retaining ring for medical miniature tubes will be produced from PC with an 8-cavity mold supplied by Wittner, Austria. This product has a part weight of only 2 mg.

此外，威猛巴頓菲爾將通過 MicroPower 系列的機器展示其在醫療技術領域的專業知識，該機器旨在用於生產無塵室版本的微型零件。使用具有 150 kN 鎖模力的 MicroPower 15/10，將用 PC

製成帶有 8 腔模具的醫用微型管的微型固定環，該模具由奧地利 Wittner 公司所提供。該產品的重量僅為 2 mg。

The machine comes with a rotary unit, an integrated WITTMANN W8VS2 robot and a camera for complete parts inspection. Following removal and camera inspection, the parts are transferred to transport containers, separated according to individual cavities.

該機器配有一個旋轉單元，一個集成的 WITTMANN W8VS2 機械手和一個用於檢查完整零件的攝像機。取出並由攝像機品質檢測後，將零件轉移到運輸容器中，並根據各個型腔進行分離。

LSR application on *SmartPower 120*

SmartPower 120 上的 LSR 液態矽橡膠應用

The important WITTMANN BATTENFELD technology for LSR processing is presented by producing a drink timer made of LSR on a machine from the servo-hydraulic *SmartPower* series, a *SmartPower 120/350*, with a 2-cavity mold supplied by Nexus, Austria. The injection unit in open design enables easy integration of the LSR metering unit. The Nexus Z200 metering unit comes with a new servomix metering system with OPC-UA integration. In the mold, latest cold runner technology is used including FLOWSET needle shut-off control. Parts removal and depositing will be handled by a W818 robot from WITTMANN.

通過在伺服液壓 *SmartPower* 系列的 *SmartPower 120/350* 機器上生產由 LSR 製成的飲料計時器，來展示用於 LSR 處理的威猛巴頓菲爾技術，該模具具有奧地利 Nexus 公司提供的 2 腔模具。開放式注射單元使 LSR 計量單元易於集成。Nexus Z200 計量單元帶有集成了 OPC-UA 的新型伺服混合計量系統。在模具中，使用了最新的冷流道技術，包括 FLOWSET 針頭關閉控制。部件的移除和堆疊將由威猛的 W818 機械手處理。

Completely updated integrated MES TEMI+ 全新版本的集成式 MES TEMI +

All WITTMANN BATTENFELD machines can be connected to the MES solution TEMI+ from ICE-flex. TEMI+ is specifically designed and optimized for the needs of the plastics industry and provides advanced OEE calculations and data integration of molding machines via Euromap 63 or 77, as well as auxiliary equipment via WITTMANN 4.0/OPC UA. The new version of TEMI+ comes with a completely new HMI engine, a powerful Production Planner and the optional IMAGOxt package for graphical measurements such as energy consumption. 所有威猛巴頓菲爾機器都可以由 ICE-flex 連接到 MES 解決方案 TEMI +。TEMI + 是為滿足塑料行業需求而專門設計和優化的產品，可通過 Euromap 63 或 77 提供先進的 OEE 計算和成型機數據集成，以及通過 WITTMANN 4.0 / OPC UA 提供輔助設備。全新版本的 TEMI + 帶有全新的 HMI 引擎，功能強大的 Production Planner (生產計劃器) 和可選的 IMAGOxt 軟件包，用於圖形化測量 (例如: 能耗)。

Although the frontend HMI has only undergone minor modifications from previous versions, the underlying framework technology is entirely new, allowing for fast operator interaction and highest stability. The updated Production Planner however has changed significantly in the new version, enabling intuitive additions and shifting of production jobs via drag & drop, an extended planning of maintenance cycles and an easy-to-understand weekly job agenda. The optional IMAGOxt package creates graphs for energy or material consumption. Actuators and alarm responses can be programmed directly from the TEMI+ interface.

儘管前端 HMI 僅對先前版本進行了較小的修改，但底層框架技術是全新的，可以實現快速的操作員交互和最高的穩定性。但是，更新後的生產計劃器在新版本中進行了重大更改，可以通過拖放操作直觀地添加和轉移生產作業，擴展維護週期計劃以及易於理解的每週工作計劃。可選的 IMAGOxt 軟件包可創建能耗或材料消耗的圖表。執行器和警報響應可以直接從 TEMI + 接口進行編程。



Fig. 1: *MicroPower 15/10 MEDICAL* 醫療級射出機 *MicroPower 15/10*



Fig. 2: Micro retaining ring for medical miniature tubes with a part weight of 2 mg
用於醫療微型管的微型固定環，重量為 2 mg



Fig. 3: EcoPower Xpress 300/1100+

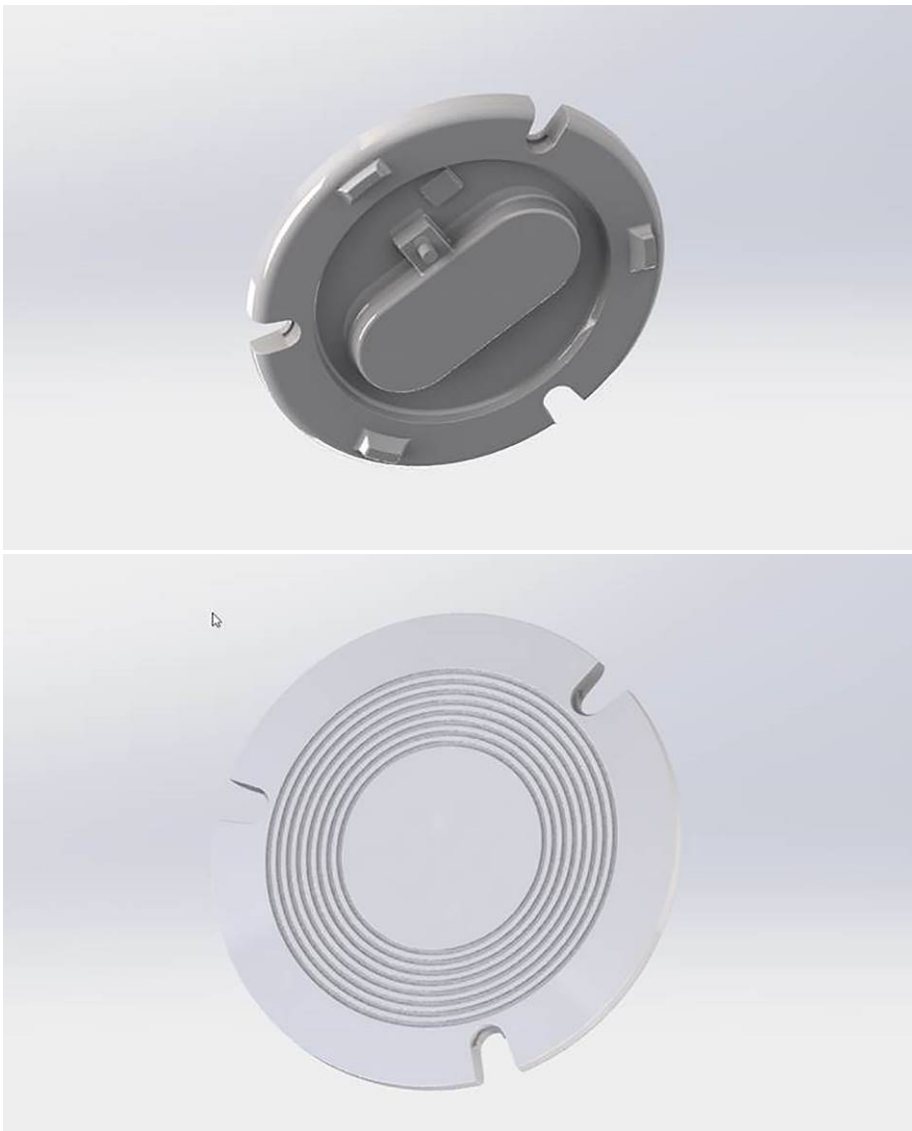


Fig. 4a + 4b: LSR drink timer – bottom part and coaster
LSR 飲料計時器-底部和杯墊

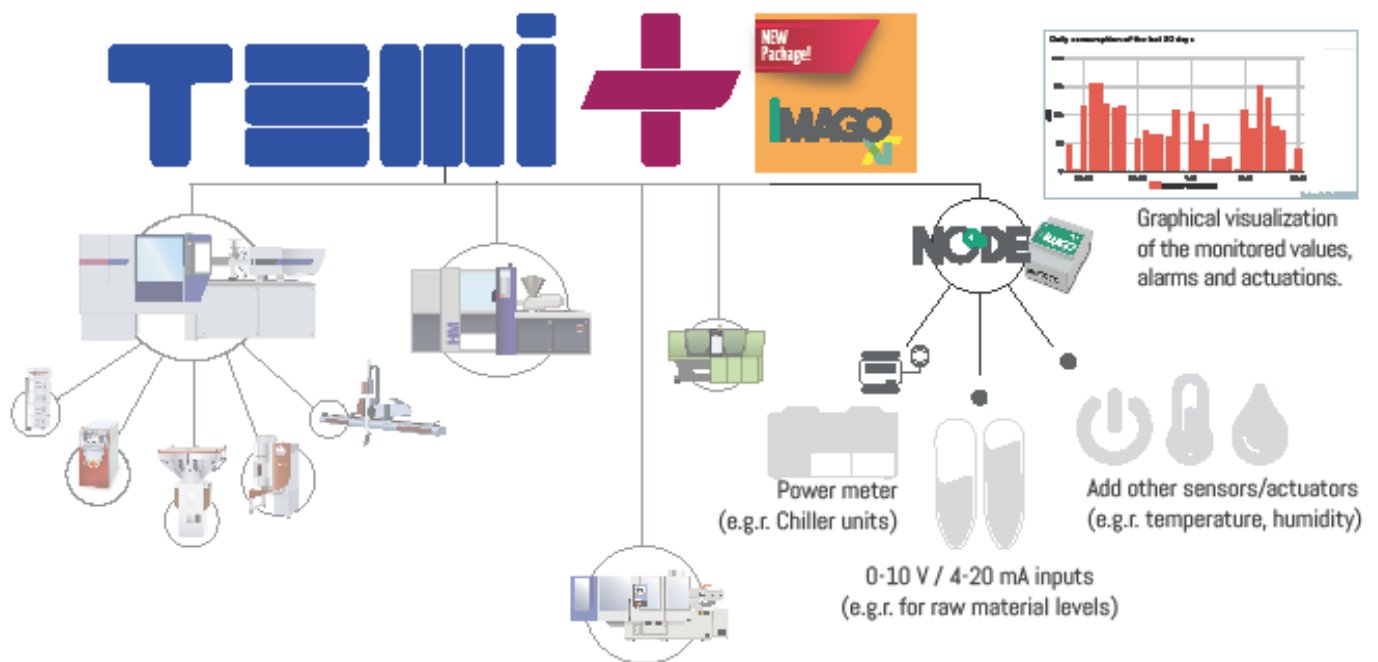


Fig. 5: Integrated TEMI+ MES, updated version 集成的 TEMI + MES，全新版本

The WITTMANN Group

The WITTMANN Group is a worldwide leader in the production of injection molding machines, robots and peripheral equipment for the plastics processing industry, headquartered in Vienna/Austria and consisting of two main divisions: WITTMANN BATTENFELD and WITTMANN. They jointly operate the companies of the group with eight production plants in five countries, and its additional sales and service companies are active with 34 facilities on all important plastics markets around the world.

WITTMANN BATTENFELD pursues the further expansion of its market position as an injection molding machine manufacturer and specialist for state-of-the-art process technologies. As a supplier of comprehensive, modern machine technology in modular design, the company meets both present and future market demands for plastics injection molding equipment.

The WITTMANN product portfolio includes robots and automation systems, material handling systems, dryers, gravimetric and volumetric blenders, granulators, temperature controllers and chillers. With this diversified range of peripheral units, WITTMANN offers plastics processors solutions to cover all production requirements, ranging from independent production cells to integrated plant-wide systems.

The syndication of the various segments under the umbrella of the WITTMANN Group has led to complete connectivity between the various product lines, for the benefit of plastics processors with an increasing demand for seamless integration of processing machinery with automation and peripherals.

威猛集團

威猛集團是塑料行業中製造射出機、機械手和周邊設備的全球領航者。威猛集團總部設在維也納/奧地利，由兩個主要部門，威猛巴頓和威猛組成，他們共同經營集團旗下分公司，在全球 5 個國家設有 8 個生產工廠，其中超過 34 個直屬子公司位於世界各大塑料市場，並各自負責該區域的銷售及售後服務。

威猛巴頓致力於製造最先進的射出機和工藝技術的獨立市場增長，提供現代化和全面的機械模組化設計，滿足塑料射出成型的實際和未來要求。

威猛的產品系列包括機械手和自動化系統，中央供料系統，除濕乾燥機，秤重式和體積式的計量機，粉碎機，模具溫度控制器和冷卻器。憑藉這種全面的周邊設備，威猛可為塑料加工商提供涵蓋所有生產要求的解決方案，從自主工作單元到整個工廠範圍的系統。

威猛集團的結合已經使所有產品線連接為一體，提供塑料加工商在射出機、自動化和輔助設備的無縫接軌，為塑料加工廠帶來了益處，對加工機械與自動化和外圍設備的無縫集成日益增長。

更多信息可參訪我們的網站 www.wittmann-group.tw

FB: <https://www.facebook.com/WittmannBattenfeldTaiwan>

YOUTUBE: <http://www.youtube.com/c/WittmannBattenfeldTaiwan>

威猛巴頓菲爾有限公司 Wittmann Battenfeld (Taiwan) Co., Ltd.

40768 台中市西屯區工業區 36 路 16 號

No.16, Gongyequ 36th Rd., Xitun Dist., Taichung City 40768, Taiwan (R.O.C.)

Tel.:886 4 23595158 Fax.:886 4 23592878 E-mail : info@wittmann-group.tw