

NEWS RELEASE

September 2018, Kottlingbrunn / 奧地利

The WITTMANN Group takes up a stake in ICE-flex

威猛集團持有 ICE-flex 的股份

Effective September 17th 2018, the WITTMANN group has entered into a joint venture with the MES producer ICE-flex. With this move, WITTMANN has taken another important step to offer its customers optimal solutions as an extension of WITTMANN 4.0.

自 2018 年 9 月 17 日起，威猛集團將與 MES 生產商 ICE-flex 建立了合資企業。通過此舉，威猛又邁出了重要的一步，這將作為 WITTMANN 4.0 的擴展，將其為客戶提供最理想的解決方案。

ICE-flex, based in Saronno / Italy, is a supplier of innovative MES solutions tailored primarily to meet the needs of injection molding companies with up to 50 machines per production plant. With the WITTMANN Group taking up a stake in ICE-flex, WITTMANN BATTENFELD is now able to offer its customers TEMI, an innovative modular MES package.

ICE-flex 總部位於意大利 Saronno，是一家創新 MES 解決方案的供應商，主要為滿足注塑公司生產智能化的需求而定制，每個生產軟件最多可配置 50 台機器使用。

隨著威猛集團收購 ICE-flex 的股份，威猛巴頓菲爾(WITTMANN BATTENFELD)現在能夠為其客戶提供 "TEMI" 是一種創新的模組化智能生產 MES 封裝。

The TEMI software already offers a considerable number of easy-to-operate functionalities as standard, such as are also known from other MES products commonly available on the market. In addition to this, ICE-flex has very successfully made a name for itself in the market as an expert in interface protocols for the injection molding industry. The TEMI software supports various manufacturer-dependent versions and interpretations of Euromap 63, which cover virtually all machine manufacturers on the European market. At the Fakuma 2018, the new Euromap 77 protocol will be introduced as an additional future communication standard. Of course, digital I/O connections with TEMI will also be available for older machines.

TEMI 軟件已經提供了業界大量易於操作的標準功能，例如市場上常見的其他 MES 產品。除此之外，ICE-flex 還成功地在市場上成為注塑行業通訊界面協議領導者。已經非常成功的贏得了聲譽。TEMI 軟件支持 Euromap 63 的各種製造商相關獨立的版本通訊協議，幾乎覆蓋了歐洲市場上的所有機械製造商。在

Fakuma 2018 年，新的 Euromap 77 協議將作為未來額外通信的標準制定。當然，使用 TEMI 的數字 I/O 連接也適用於舊機器。

WITTMANN BATTENFELD is selling the package developed by ICE-flex for production planning, monitoring and data storage under the brand name TEMI+. The “+” stands for the support of functions which can only be realized with WITTMANN 4.0 production cells. In this way, it has become possible to connect not only injection molding machines with TEMI+, but simultaneously – and automatically – also all auxiliaries which, together with a WITTMANN BATTENFELD machine, form a production cell via WITTMANN 4.0. Any alterations in the composition of the production cell are recognized automatically within the cell, and the new configuration is subsequently displayed and saved correctly by TEMI+ without operator intervention. With this function, the WITTMANN Group is the first manufacturer in the plastics industry able to offer the MES functionality not only for machines, but also for mobile auxiliaries in a molding plant.

威猛巴頓菲爾正在銷售由 ICE-flex 開發的智能生產軟件系統，監控數據存儲的軟件包，其品牌名稱為 TEMI +。“+”功能代表只能通過威猛 4.0 生產單元實現。通過這種方式，不僅可以將注塑機與 TEMI + 連接，還能同時並且自動的連接所有輔助設備，這些輔助設備與威猛巴頓菲爾機器一起通過威猛 4.0 形成智能生產單元。生產單元組成的任何改變都在單元內自動識別，新的配置隨後會由 TEMI + 正確顯示和保存新配置，無需人員干預。憑藉此功能，威猛集團是塑料行業的第一家能夠提供 MES 功能的製造商，不僅可用於機器，還可用於注塑廠的移動輔助設備。

TEMI+ was developed on the basis of a web browser architecture, to enable all users to retrieve and process the data saved in TEMI+ using their personal access data from anywhere on the corporate premises. For example, this includes access to the TEMI+ program from every WITTMANN BATTENFELD B8 operating terminal.

TEMI + 是在 Web 瀏覽器體系結構的基礎上開發的，使所有用戶能夠檢索和處理存儲在 TEMI + 中保存的數據，並可使用他們在工作場所的任何地方的個人 web 來登錄查詢數據。例如，包括從每個威猛巴頓菲爾 射出成型機 B8 控制器來操作查詢 TEMI + 程序。

The goal of ICE-flex and the WITTMANN Group is to offer an open MES system which can incorporate the entire range of injection molding machinery of a molding plant.

Michael Wittmann, Managing Director of the WITTMANN Group comments: “TEMI+ is the first MES software worldwide which supports and integrates mobile auxiliaries in molding plants through our WITTMANN 4.0 technology. Of course, this provides innumerable advantages for customers. For example central storage of all settings of a given work cell, or the display of work cell OEE and ad hoc KPIs for the auxiliaries. With our stake in ICE-flex we have thus taken an important step in the further development of our WITTMANN 4.0 integration concept.”

ICE-flex 和威猛集團的目標是提供一個開放式 MES 系統，該系統可以整合一個注塑廠的整個注塑機械系列。

威猛集團總經理 Michael Wittmann 評論道：“TEMI + 是全球首個通過 WITTMANN 4.0 技術支持並集成了注塑工廠移動輔助設備的 MES 軟件。當然，這為客戶提供了無限的優勢。比如，給定工作單元的所有設置的中央存儲，或者輔助設備的工作單元 OEE 和臨時 KPI 的顯示。憑藉我們在 ICE-flex 中的股份，使我們在威猛 4.0 集成概念的進一步發展上邁出了重要的一步。”



Fig. 1: from the left: Marco Ravazzani and Giorgio Pigozzo from ICE-Flex, Michael Wittmann, Managing Director of the WITTMANN Group, and Marco Pelagatti, ICE-Flex, after signing the joint venture agreement.

左起：來自 ICE-Flex 的 Marco Ravazzani, Giorgio Pigozzo 及 威猛集團董事總經理 Michael Wittmann 和 ICE-Flex 的 Marco Pelagatti 簽署合資協議後的合照。



Fig. 2: from the left: Marco Ravazzani and Giorgio Pigozzo from ICE-Flex, Michael Wittmann, Managing Director of the WITTMANN Group, Marco Pelagatti, ICE-Flex and Lugiano Arreghini, Managing Director of WITTMANN BATTENFELD Italia in front of the Milan Cathedral

左起：來自 ICE-Flex 的 Marco Ravazzani 和 Giorgio Pigozzo，威猛集團董事總經理 Michael Wittmann，ICE-Flex 的 Marco Pelagatti 以及 WITTMANN BATTENFELD Italia 董事總經理 Lugiano Arreghini 在米蘭大教堂前合照。

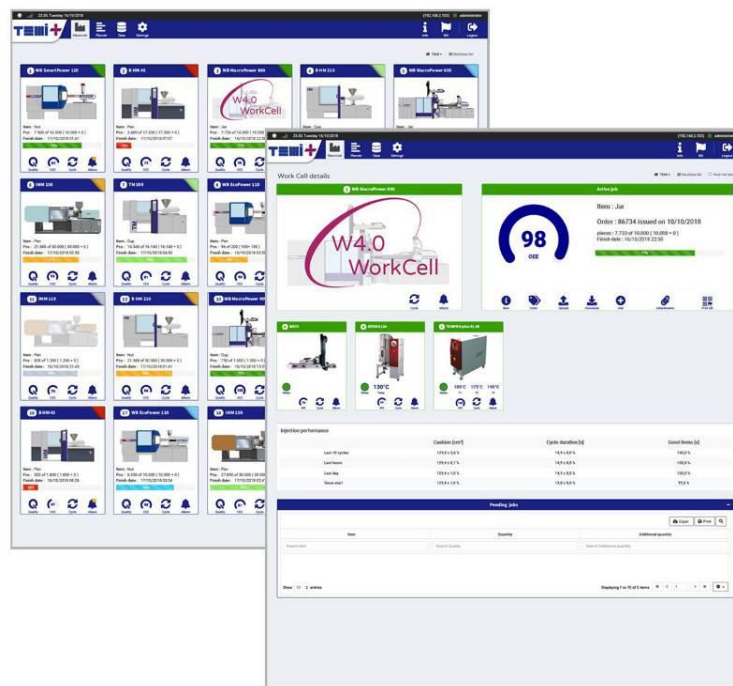


Fig. 3: dashboard – WITTMANN 4.0 work cell
儀表板 - 威猛 4.0 工作單元

威猛集團

威猛集團是塑料行業中製造射出機、機械手和周邊設備的全球領航者。威猛集團總部設在維也納/奧地利，由兩個主要部門，威猛巴頓和威猛組成，在全球 5 個國家設有 8 個生產工廠，其中超過 33 個直屬子公司位於世界各大塑料市場。威猛巴頓致力於製造最先進的射出機和工藝技術的獨立市場增長，提供現代化和全面的機械模塊化設計，滿足塑料射出成型的實際和未來要求。

威猛的產品系列包括機械手和自動化系統，中央供料系統，除濕乾燥機，稱重式和體積式的計量機，粉碎機，模具溫度控制器和冷卻器。憑藉這種全面的周邊設備，威猛可為塑料加工商提供涵蓋所有生產要求的解決方案，從自主工作單元到整個工廠範圍的系統。

威猛集團的結合已經使所有產品線連接為一體，提供塑料加工商在射出機、自動化和輔助設備的無縫接軌，成為尋求集成方面的所在優勢 - 所有這些都以漸進的速度發生。