

*Solutions for the Packaging Industry*



*High Performance IML Automation*

Technology working for you.

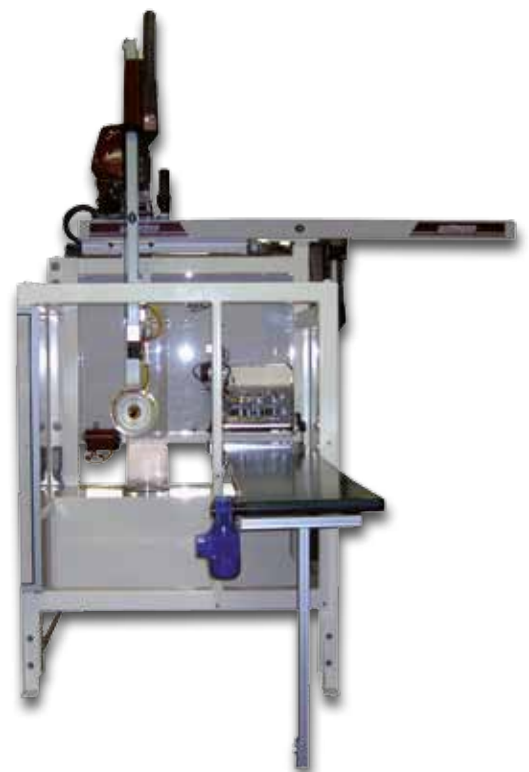
**Wittmann**  
world of innovation

## Advantages

- A wide variety of solutions with top or side entry robot.
- A complete range of label magazines for sizes from 30 ml up to 20 lit. containers.
- Standard TeachBox for all WITTMANN robots.
- Worldwide services for start-up and training.
- Turnkey solutions with injection molding machines.
- Numerous options for control and stacking.
- Open programming.



## High-class IML Equipment



# Innovative Product Development and Efficient Manufacturing

CNC machinery



Robot assembly



Assembly of IML systems



Plant in Grenoble, France



## Robots and IML Systems from Austria and France

- Innovative product development: robots, take-out and IML systems.
- Testing center: climate and clean room simulations in view of different work environments.
- Efficient manufacturing.

Headquarters in Vienna, Austria



## High-class Robot Control

### Simple and flexible

- Shortest training time for personnel.
- Free programming of every robot operation.
- Infinite diagnostic possibilities of the robot functions.
- Integrated observation of maintenance intervals.
- Different programming levels for the respective user profile.



Operating manual, online help



AutoSwitch function



Language selection

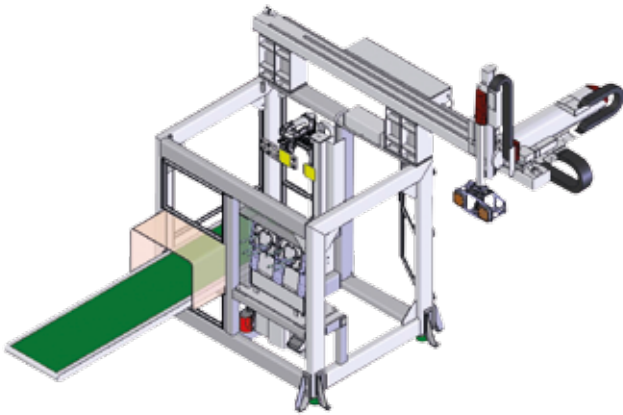


# Top Entry Robots

- Robot models are ranging from **W818** (6 kg) up to **W853** (75 kg).
- The robot can be mounted on the fixed platen, or on an external frame.
- High flexibility design for all kinds of IML applications (flat labels or wrap labels).
- Possibility of using an external stacking unit.
- Gripper with quick coupling connection.



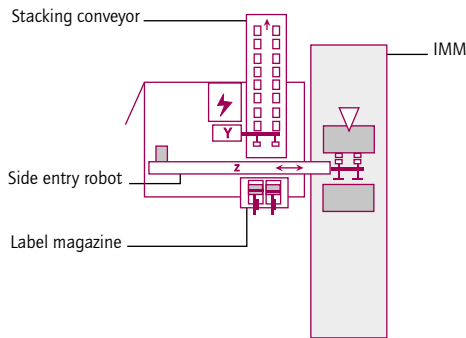
W818



Stack of 20 lit. boxes

Robot	W818	W821	W832	W833	W843	W853
IMM clamping force	≤ 200	≤ 400	≤ 650	≤ 750	≥ 750	≥ 750
Dry cycle time	10 sec	8 sec	10 sec	10 sec	14 sec	14 sec
Max. payload	6 kg	10 kg	20 kg	15 kg	35 kg	75 kg
Horizontal stroke Z-axis max.	2,500 mm	4,000 mm	5,000 mm	5,000 mm	6,000 mm	6,000 mm
Vertical stroke Y-axis max.	1,200 mm Single vertical arm	1,200 mm Single vertical arm	1,600 mm Single vertical arm	1,800 mm Telescopic arm	2,600 mm Telescopic arm	3,000 mm Telescopic arm
Kick stroke X-axis max.	620 mm	550 mm	900 mm	900 mm	1,200 mm	1,500/2,000 mm
<b>ULTRA HIGH SPEED ROBOT</b>		<b>W821 UHS</b>	<b>W832 UHS</b>	<b>W833 UHS</b>		
Dry cycle time		6 sec	7 sec	7 sec		
Max. payload		3 kg	7 kg	5 kg		

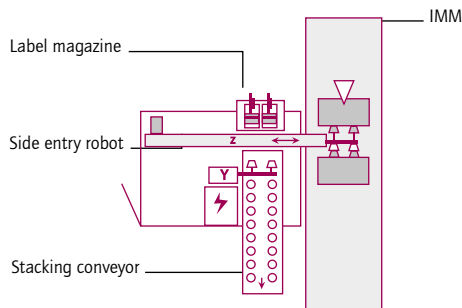
## W837 F – Flat Labels for Lids, 3-sided to 5-sided Container Labels



Flat label	Lid	3-sided	5-sided
Number of cavities	≤ 8		≤ 8
IMM clamping force	≤ 500 t		
Dry cycle time	3 sec	4 sec	4 sec
Foot print area	approx. 1,850 x 2,250 mm		
Robot weight	1,800 kg		
Maximum payload	50 kg		
Maximum speed	6 m/sec		
Consumption of electricity	18 KVA		



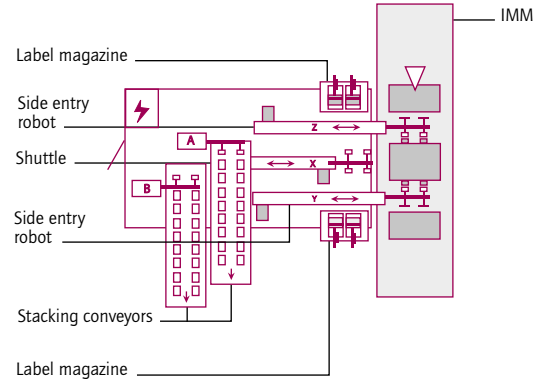
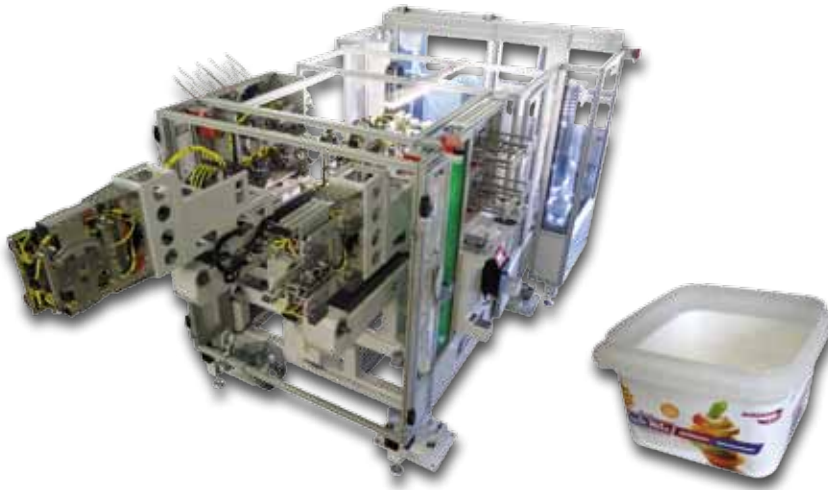
## W837 W – Wrap Around Labels



Wrapped label	≤ 250 ml	≤ 500 ml	≤ 1.5 l	≤ 5 l
Number of cavities	≤ 8	≤ 8	≤ 4	≤ 2
IMM clamping force	≤ 500 t			
Dry cycle time	4 sec	4.5 sec	5 sec	7 sec
Foot print area	approx. 1,850 x 2,250 mm			
Robot weight	1,800 kg			
Maximum payload	50 kg			
Maximum speed	6 m/sec			
Consumption of electricity	18 KVA			



# W837 TWIN – Stack Mold



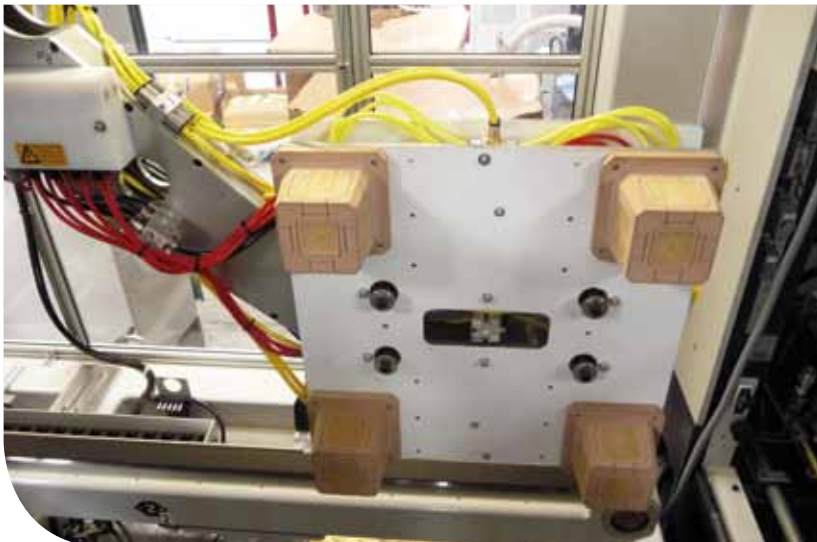
Label placement	360° Wrap			Lid/Container		
	≤ 250 ml	≤ 500 ml	≤ 1,500 ml	flat	3-sided	5-sided overlap
Number of cavities	≤ 4 + 4		≤ 4 + 4	≤ 6 + 6	≤ 6 + 6	≤ 6 + 6
IMM clamping force	≤ 500 t					
Dry cycle time	5 sec	5.5 sec	6 sec	4 sec	4.5 sec	5 sec
Foot print area	approx. 2,300 x 3,670 mm					
Height	2,220 mm					
Weight	2,500 kg					
Maximum payload	50 kg					
Consumption of electricity	18 KVA					

## End-of-arm-tooling and Label Magazine

- Grippers are highly rigid and are made of steel or aluminum sections.
- Dummy cores are made of the latest material generation, providing maximum efficiency in regard to electrostatic charges.
- Auto-wrapping mandrel for short cycle times and label placement accuracy.
- Many servo motor options available regarding kick stroke and dummy rotation.

- Storage and dispensing of labels.
- Error-free separation of each label.
- Magazine reload without robot stop.

4 containers: 500 ml each



Turntable for different label shapes



Inclined label magazine



# Stacking Function

Belt material suitable for food processing



Horizontal stacker available for cups



- Accumulation of the finished parts on the conveyor belt in regular intervals.
- Extends the cooling time.
- Robot/Conveyor interface included.
- The conveyor belt dimensions are: 2,500 x 600 mm.

## Various Options

- Floor guiding rails facilitating the repositioning of the robot's axis.
- Guiding rail is equipped with a hand wheel for moving the robot precisely.
- Different solutions for parts packaging available.
- Part inspection solutions.

Floor guiding rail for mold thickness adjustment



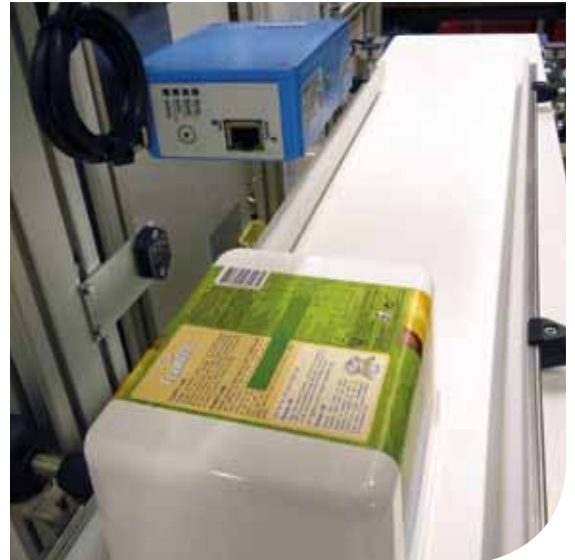
Stairs for user-friendly label loading



Label detection: color sensor



Label detection: bar code scanner





Technology working for you.

**WITTMANN Kunststoffgeräte GmbH**

Lichtblaustrasse 10

1220 Vienna | Austria

Tel.: +43 1 250 39-0 | Fax: +43 1 259 71 70

[info.at@wittmann-group.com](mailto:info.at@wittmann-group.com)

[www.wittmann-group.com](http://www.wittmann-group.com)